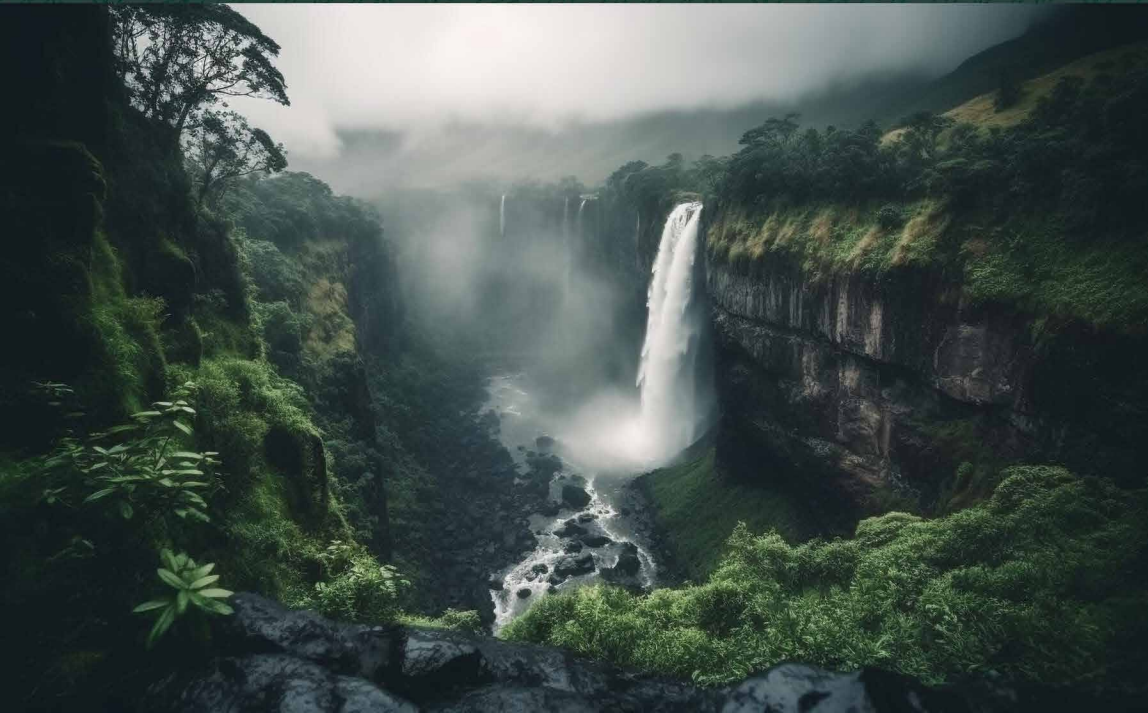




KRISHNA — VALLEY — KHOPOLI



**NATURE'S
OWN
ABODE**



SPACIOUS 1-2 BHK FLATS
WITH LIFESTYLE AMENITIES

THE *Landmark* TOWNSHIP



Serene Living: A Modern Oasis on 20 Acres

Nestled within the tranquility of a sprawling 20-acre township, this residential haven boasts over 2000 meticulously designed units, offering a harmonious blend of comfort and elegance. The 1 & 2BHK Valley View Flats showcase breathtaking vistas of lush green valleys, providing residents with a serene retreat from the hustle and bustle of city life. Crafted with a contemporary touch, each unit is equipped with ultra-modern amenities, ensuring a lifestyle of convenience and luxury. From state-of-the-art fitness centers to vibrant community spaces, the township is thoughtfully curated to foster a sense of community and well-being. This enclave seamlessly integrates modern living with the beauty of nature, creating a perfect balance for those seeking a sophisticated and peaceful abode.



Premium LIVING

Waterfall Views and Hillside Serenity

Experience luxury at our premium project with seasonal waterfall views and a nearby hill station. This enchanting setting complements top-notch amenities, including a fitness center, vibrant community spaces, and a club house. The convenience of a school nearby ensures an exceptional education for your family. This residence seamlessly blends sophistication with natural beauty, offering a premium living experience crafted for comfort and elegance. Welcome to a world of convenience, where every detail enhances your daily life.



Crafting HAPPINESS

Where Thoughtful Planning Transforms Dreams into Reality.

Project Highlights:

- ❖ Upcoming 20 Acre Township | 2000+ Units
- ❖ 1 & 2 BHK Valley Flats with Ultra-modern Amenities
- ❖ Centrally located Grand Clubhouse on 1 acre
- ❖ Located besides famous Zenith Waterfall
- ❖ Upcoming CBSE Board School
- ❖ Plethora of indoor & outdoor amenities



Fuel **YOUR WELLNESS**
 Fitness for Mind, Body,
 and Soul.

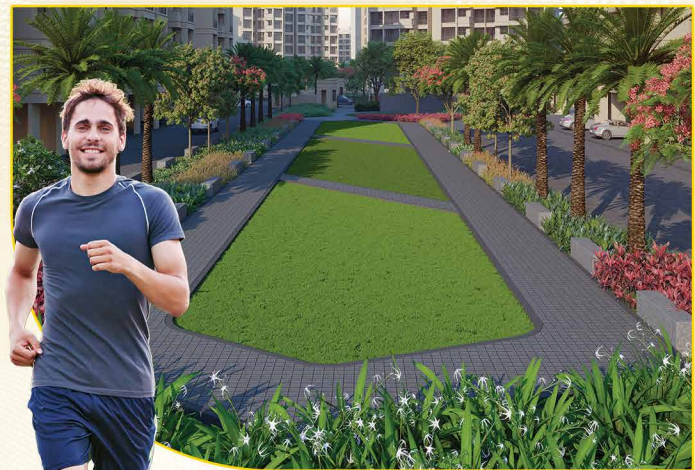
KIDS PLAY AREA



MULTIPURPOSE COURT



JOGGING TRACK



MINI FOOTBALL GROUND



- ❖ GRAND CLUB HOUSE
- ❖ LARGE SWIMMING POOL
- ❖ MULTIPURPOSE COURT
- ❖ MINI FOOTBALL GROUND
- ❖ CRICKET NET
- ❖ KIDS PLAY AREA
- ❖ JOGGING TRACK
- ❖ INDOOR GAMES
- ❖ GYMNASIUM
- AND MUCH MORE...





Dive into Joy:
Where Every Splash Creates Endless Smiles.

Enter into the world of mesmerizing clubhouse facilities. The biggest concierge cum reception hall welcomes you to world of leisure & sports zone. Whether it's a gymnasium, snooker, chess, carrom, table tennis etc. you name it and you'll have it. Pump up your flexes, train your brain, concentration, determination or else strike, it's all about winning your heart. Come find your own play.

Project SPECIFICATIONS

Crafted Excellence, Every Detail a Masterpiece: Where Quality Materials and Trusted Brands Build Your Home of Distinction.

FLOORING

- 2'x2' vitrified tiles flooring in all rooms
- Anti-skid tiled in W.S & open balcony

KITCHEN

- Granite kitchen platform with branded S.S sink

WALL & TILES

- Tiles upto beam bottom level above platform
- ODB paint on internal walls
- Acrylic paint on external walls

DOORS & WINDOW

- Laminates flush door in all rooms
- Powder-coated aluminium frame with glass sliding windows
- Marble sill in all windows
- Wooden door frames in all rooms

PARKING

- Ample car parking for each building
- Decorative compound wall with Entrance Gate for the

BATH & WC

- Marble/wooden frames in WC & Bath with decollate shutter
- Designer tiles bathroom with branded sanitary ware
- Concealed plumbing with CP fitting
- Wall tiles upto door levels.

PROJECT

- Project within Khopoli Municipal Council Limit
- Centrally located Clubhouse area

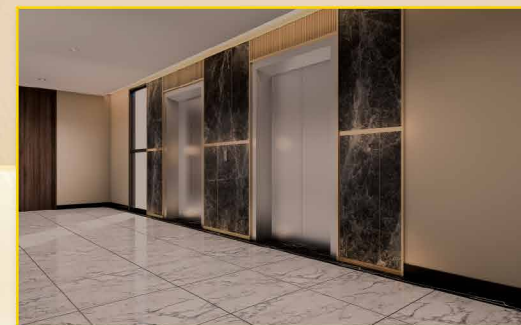
ELECTRIFICATION

- Concealed copper wiring with required light points in all rooms
- Branded electrical fitting with modular switches
- Fridge & Water filter point in kitchen
- TV points in living rooms
- Telephone points in living rooms
- Geyser point in all bathrooms
- AC point in bedroom

SAFETY

- Earthquake-resistant RCC structure

With an array of outstanding amenities, tranquility transforms your mindset into a masterpiece, like strokes on a canvas, painting your peace of mind.



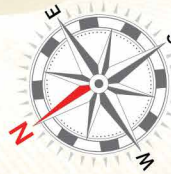
Nature's SYMPHONY

Where Rivers Flow, Waterfalls Cascade,
and Hills Paint the Horizon from Your Balcony!"





AVYUKTA

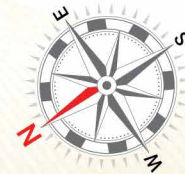


TYPICAL FLOOR PLAN





AVYUKTA



8TH FLOOR PLAN



Riverside BLISS

Where Lights Twinkle, River Breezes Serenade,
and Every Night is a Spectacle!



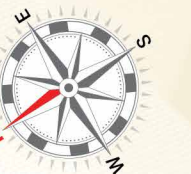
ANANTA

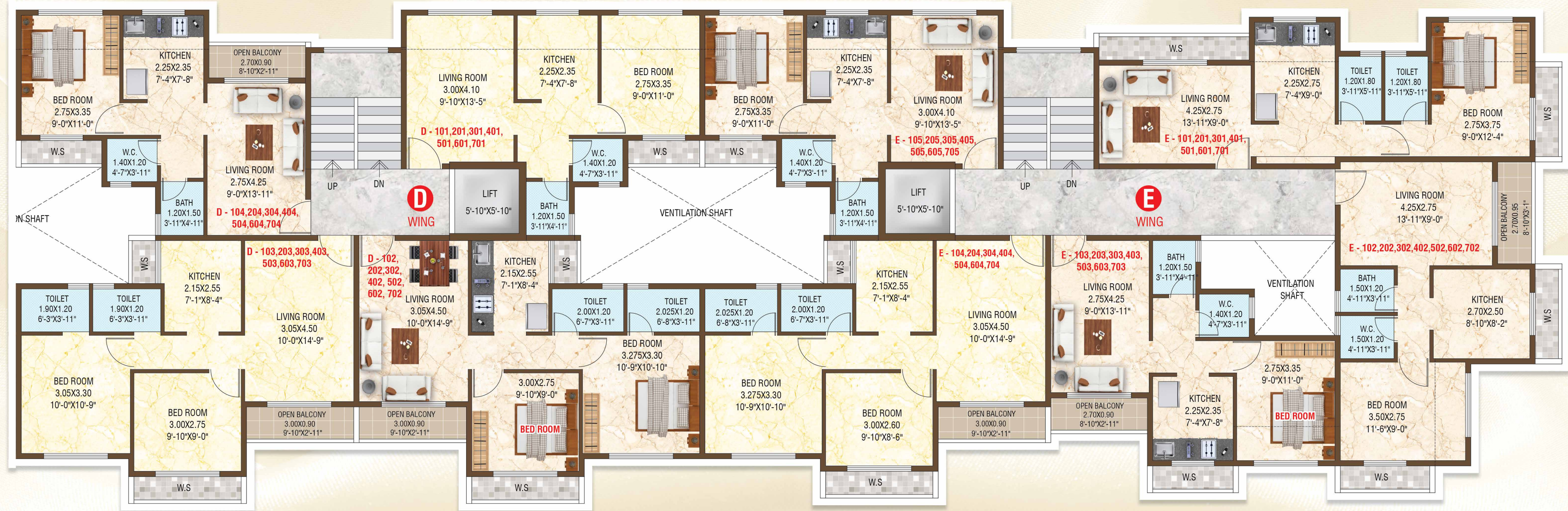




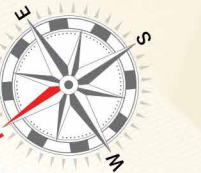
TYPICAL FLOOR PLAN OF A, B & C WINGS

DISCLAIMER: A, B AND C WINGS ARE NOT FOR SALE AND ARE ONLY SHOWN SO AS FOR THE BUYER TO GET A HOLISTIC VIEW OF THE COMPLETE PROJECT, AS A, B AND C WINGS ARE PROPOSED BUT CURRENTLY NOT APPROVED.

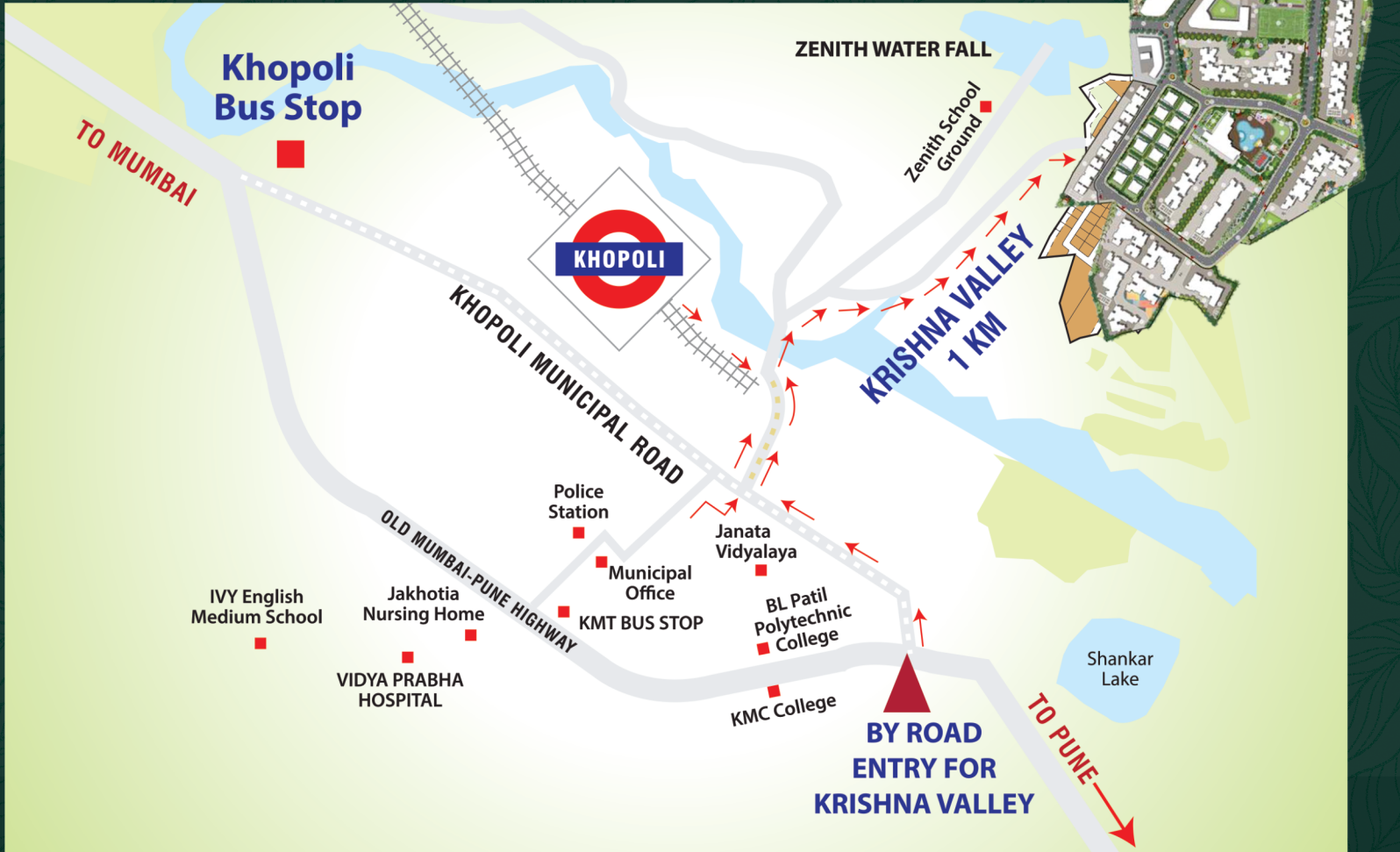




TYPICAL FLOOR PLAN OF D & E WINGS



THE *Landmark* LOCATION



-  **3 mins from Railway Station**
-  **5 mins from Municipal Bus Stop**
-  **15 mins from Imagica**
-  **15 mins from Khandala / Lonavala**
-  **35 mins from upcoming International Airport**
-  **Proposed Panvel - Khopoli Train**



**CALL US ON
8287240240**

Corporate Office: A-708, Hermes Atrium, 7th Floor, Plot No. 57, Sector - 11, CBD Belapur, Navi Mumbai - 400 614.
Administration Office: Shop Nos. 1 & 2, Magnum Apartment, Plot 11-A, Sector 11, Vijay Marg, New Panvel(E), Panvel, Maharashtra 410206
Email: info@prishtygroup.com | **Website:** www.prishtygroup.com

MAHARera Reg. Nos. Phase III P52000031990 | MAHARera Reg. Nos. Phase IV P52000051753
 The project has been registered via MAHARERA Registration Numbers: Phase I-P5200000557 · Phase II-P52000013243 · Phase III-P52000031990
 Phase IV-P52000051753 and is available on the website <https://maharera.mahaonline.gov.in> under registered projects.

Site Add.: Krishna Valley, Besides Zenith Waterfall, Khopoli Vihari, Khopoli, Tal- Khalapur, Maharashtra 410202

Disclaimer: All specifications, drawings, amenities, facilities, parameters etc., shown in this brochure are subject to change as per the approval from the respective authorities. The final discretion remains with the developer. *Conditions Apply